

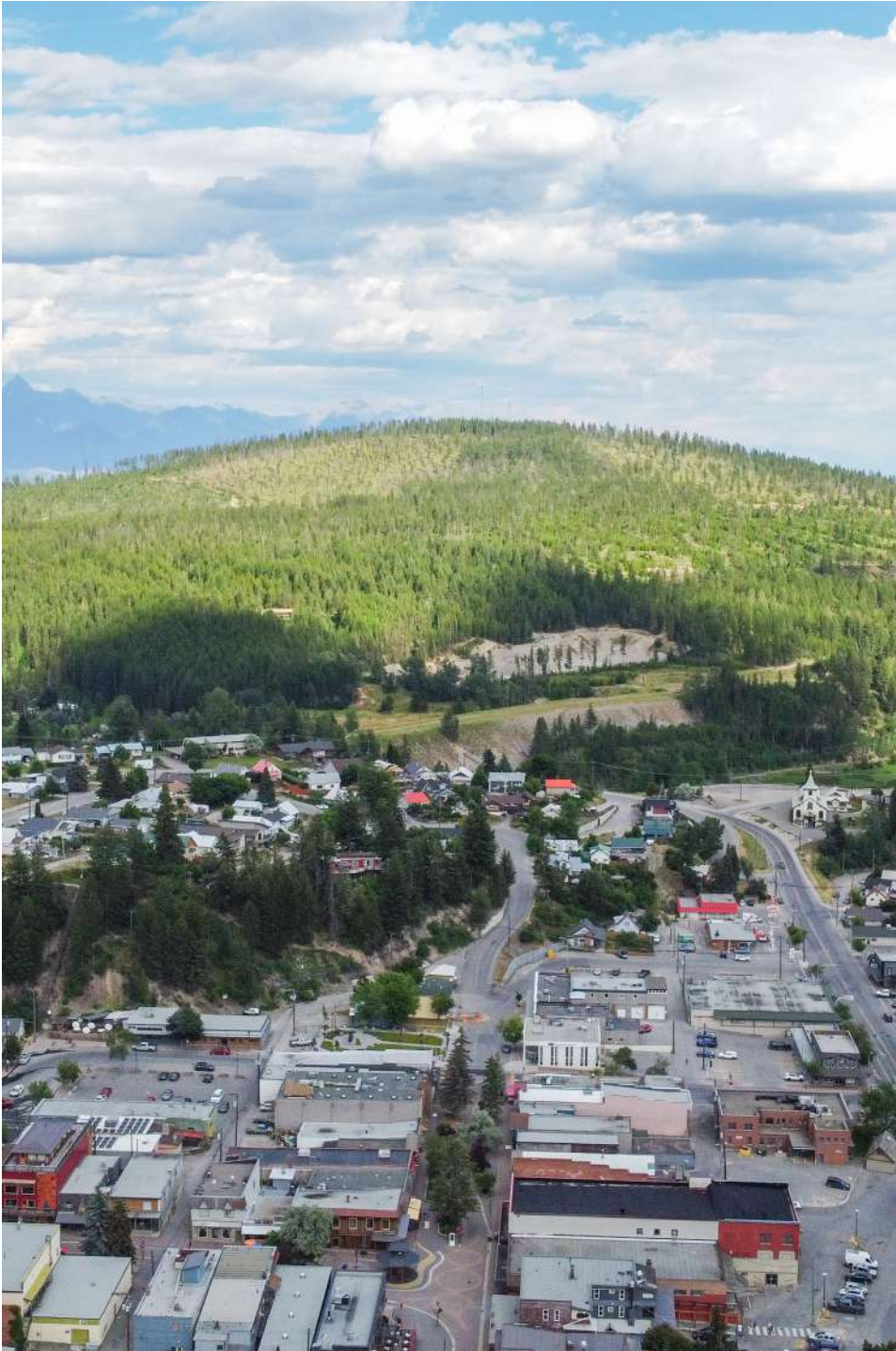


Sotheby's
INTERNATIONAL REALTY
Canada

TAYLOR'S MILL

FOR SALE
UP TO 683 ACRES OF DEVELOPMENT LAND

TAYLOR'S MILL SITE
KIMBERLY, BRITISH COLUMBIA



PROPERTY FEATURES



AMENITIES

Hiking & biking trails, golf courses, aquatic centre & much more!



LOCATION

Site comprised of City of Kimberly and Regional District land



CELLULAR TOWERS

Two cellular tower leases providing holding income



ZONING

CD - 20 acres commercial use, 50 acres industrial use & remainder as residential

THE NUMBERS



SIZE

Up to 683 Acres - will entertain partial sale



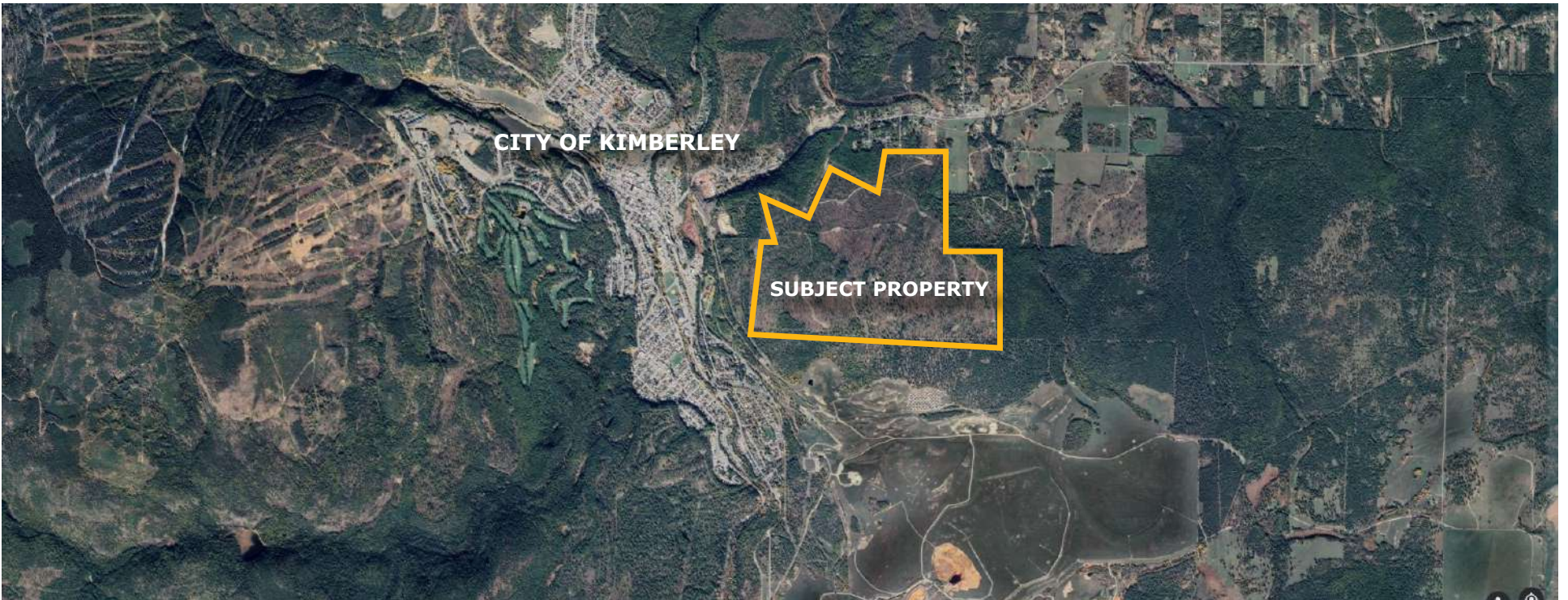
PRICE

Contact brokers for pricing

This large property sits between the City of Kimberly and the Regional District of the Kootenays. Current CD zoning references 20 acres of commercial use, 50 acres of industrial use and the remainder as residential. Motivated sellers are willing to consider the sale of various parcel sizes at significantly reduced pricing! Two cellular tower leases providing holding income. Kimberly is one of Canada's fastest growing municipalities with 9.6% growth since 2016. With an estimated population of 8,804 it was named B.C.'s Best Small Town in 2022 by CBC. The City of Kimberly has incredible amenities including extensive hiking and biking trails, Kimberley Alpine Resort, 2,000 acre Kimberley Nature Park, 7 golf courses, Aquatic Centre and municipal skate park. Kimberley is only 30 kilometres north from Cranbrook which has a population of 20,775 as well as direct flights to Calgary and Vancouver.



TAYLOR'S MILL SITE KIMBERLY, BC





Sotheby's
INTERNATIONAL REALTY

Canada



Let's chat.

LEE LEVERING

PERSONAL REAL ESTATE CORPORATION

Lee.levering@venturecommercial.ca
250.258.9430

SCOTT MARSHALL

PERSONAL REAL ESTATE CORPORATION

Scott@ScottMarshallHomes.com
250.470.2388

Venture Commercial was born from a competitive vision to reimagine and elevate the practices of commercial real estate. Our clients benefit from the expertise of the largest commercial real estate brokerage in the Okanagan and the flexible, collaborative and creative representation of a boutique real estate firm.

Our highly driven team is dedicated to building longstanding relationships and uncovering opportunity for our clients. As industry leaders, we aim to guide you through the process with wisdom, fairness and transparency every step of the way. Success for us is not the next commission; rather, it is defined by establishing partnerships throughout the complete life cycle of our client's business.

This document/email has been prepared by Venture Commercial for advertising and general information only and makes no guarantees, representations or warranties of any kind, expressed or implied, regarding the information including, but not limited to, warranties of content, accuracy and reliability.

We assume that the property is free of any environmental condition that would negatively impact the market value of the property. Unless otherwise stated, we have not performed a review of title, nor any encumbrances that appear on title. We are not Lawyers, nor Accountants and thus are not qualified to provide legal or accounting advice.

Any interested party should undertake their own inquiries as to the accuracy of the information. Venture Commercial excludes unequivocally all inferred or implied terms, conditions and warranties arising out of this document and excludes all liability for loss and damages arising there from. This publication is the copyrighted property of Venture Commercial and /or its licensor(s).